

Acta Crystallographica Section E

## Structure Reports

Online

ISSN 1600-5368

# 1-Methyl-4-[(1*E*)-2-nitroprop-1-en-1-yl]-benzene

 Zhao-Bo Li,<sup>a,b\*</sup> Li-Li Shen<sup>b</sup> and Jian-An Zheng<sup>c</sup>

<sup>a</sup>Hangzhou Minsheng Pharmaceutical Group Co. Ltd, Hangzhou 310000, People's Republic of China, <sup>b</sup>State Key Laboratory Breeding Base of Green Chemistry–Synthesis Technology, Zhejiang University of Technology, Hangzhou 310014, People's Republic of China, and <sup>c</sup>Jiaxing Zhonghua Chemical Industry Co. Ltd, Daqiao Town Nanhu District, Jiaxing 314006, People's Republic of China  
Correspondence e-mail: boyzb@163.com

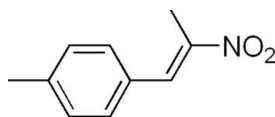
Received 8 May 2012; accepted 7 June 2012

Key indicators: single-crystal X-ray study;  $T = 296$  K; mean  $\sigma(\text{C}-\text{C}) = 0.002$  Å;  $R$  factor = 0.045;  $wR$  factor = 0.134; data-to-parameter ratio = 17.9.

The title compound,  $\text{C}_{10}\text{H}_{11}\text{NO}_2$ , adopts an *E* conformation about the  $\text{C}=\text{C}$  bond. The  $\text{C}=\text{C}-\text{C}=\text{C}$  torsion angle is  $32.5(3)^\circ$ . The crystal structure features weak intermolecular  $\text{C}-\text{H}\cdots\text{O}$  interactions.

## Related literature

For background to the chemistry of nitroalkenes, see: Ballini & Petrini (2004); Berner *et al.* (2002); Ono (2001). For a related structure, see: Yang *et al.* (2010).



## Experimental

### Crystal data

 $\text{C}_{10}\text{H}_{11}\text{NO}_2$ 
 $M_r = 177.20$ 

 Orthorhombic, *Pbca*
 $a = 11.0610(5)$  Å

 $b = 7.5840(4)$  Å

 $c = 22.6420(11)$  Å

 $V = 1899.36(16)$  Å<sup>3</sup>
 $Z = 8$ 

 Mo  $K\alpha$  radiation

 $\mu = 0.09$  mm<sup>-1</sup>
 $T = 296$  K

 $0.58 \times 0.43 \times 0.36$  mm

### Data collection

Rigaku R-Axis-RAPID/ZJUG diffractometer

 Absorption correction: multi-scan (*ABSCOR*; Higashi, 1995)

 $T_{\min} = 0.941$ ,  $T_{\max} = 0.969$ 

16972 measured reflections

2162 independent reflections

 1325 reflections with  $I > 2\sigma(I)$ 
 $R_{\text{int}} = 0.033$ 

### Refinement

 $R[F^2 > 2\sigma(F^2)] = 0.045$ 
 $wR(F^2) = 0.134$ 
 $S = 1.00$ 

2162 reflections

121 parameters

H-atom parameters constrained

 $\Delta\rho_{\max} = 0.15$  e Å<sup>-3</sup>
 $\Delta\rho_{\min} = -0.17$  e Å<sup>-3</sup>
**Table 1**

Hydrogen-bond geometry (Å, °).

$D-\text{H}\cdots A$	$D-\text{H}$	$\text{H}\cdots A$	$D\cdots A$	$D-\text{H}\cdots A$
$\text{C8}-\text{H8}\cdots\text{O1}^i$	0.93	2.55	3.369 (2)	147
$\text{C2}-\text{H2}\cdots\text{O2}^{ii}$	0.93	2.66	3.551 (3)	162

 Symmetry codes: (i)  $-x + 1, -y, -z + 1$ ; (ii)  $x + \frac{1}{2}, -y + \frac{1}{2}, -z + 1$ .

Data collection: *PROCESS-AUTO* (Rigaku, 2006); cell refinement: *PROCESS-AUTO*; data reduction: *CrystalClear* (Rigaku, 2007); program(s) used to solve structure: *SHELXS97* (Sheldrick, 2008); program(s) used to refine structure: *SHELXL97* (Sheldrick, 2008); molecular graphics: *ORTEP-3 for Windows* (Farrugia, 1997); software used to prepare material for publication: *WinGX* (Farrugia, 1999).

The authors thank Mr Jianming Gu for the single-crystal X-ray analysis. They are also grateful for financial support from the State Key Laboratory Breeding Base of Green Chemistry–Synthesis Technology of Zhejiang University of Technology (GCTKF2012010).

Supplementary data and figures for this paper are available from the IUCr electronic archives (Reference: ZQ2167).

## References

- Ballini, R. & Petrini, M. (2004). *Tetrahedron*, **60**, 1017–1047.  
 Berner, O. M., Tedeschi, L. & Enders, D. (2002). *Eur. J. Org. Chem.* **12**, 1877–1894.  
 Farrugia, L. J. (1997). *J. Appl. Cryst.* **30**, 565.  
 Farrugia, L. J. (1999). *J. Appl. Cryst.* **32**, 837–838.  
 Higashi, T. (1995). *ABSCOR*. Rigaku Corporation, Tokyo, Japan.  
 Ono, N. (2001). *The Nitro Group in Organic Synthesis*. New York: Wiley-VCH.  
 Rigaku (2006). *PROCESS-AUTO*. Rigaku Corporation, Tokyo, Japan.  
 Rigaku (2007). *CrystalClear*. Rigaku Americas Corporation, Texas, USA.  
 Sheldrick, G. M. (2008). *Acta Cryst.* **A64**, 112–122.  
 Yang, J.-K., Zheng, M., Luo, S.-P. & Li, Z.-B. (2010). *Acta Cryst.* **E66**, o1781.

## supplementary materials

*Acta Cryst.* (2012). E68, o2065 [doi:10.1107/S1600536812025913]

**1-Methyl-4-[(1*E*)-2-nitroprop-1-en-1-yl]benzene****Zhao-Bo Li, Li-Li Shen and Jian-An Zheng****Comment**

Nitroalkenes are important organic intermediates, since they can be converted to synthetically useful N- and O-containing organic molecules, such as amines, aldehydes, carboxylic acids, or denitrated compounds (Ono, 2001; Berner *et al.*, 2002; Ballini & Petrini, 2004). As a contribution in this field, we have synthesized a series of nitroalkenes by employing benzaldehydes and nitroethane (Yang *et al.*, 2010). We report here the crystal structure of the title compound (Fig. 1).

The molecule adopts an *E* configuration with respect to the C8=C9 double bond. The torsion angle C9—C8—C1—C6 is 32.5 (3)°. In the crystal structure, the molecules interact through weak intermolecular C8—H8⋯O1<sup>i</sup> and C2—H2⋯O2<sup>ii</sup> hydrogen bonds (symmetry codes: *i* = -*x*+1, -*y*, -*z*+1; *ii* = *x*+1/2, -*y*+1/2, -*z*+1; Fig. 2 and Table 1).

**Experimental**

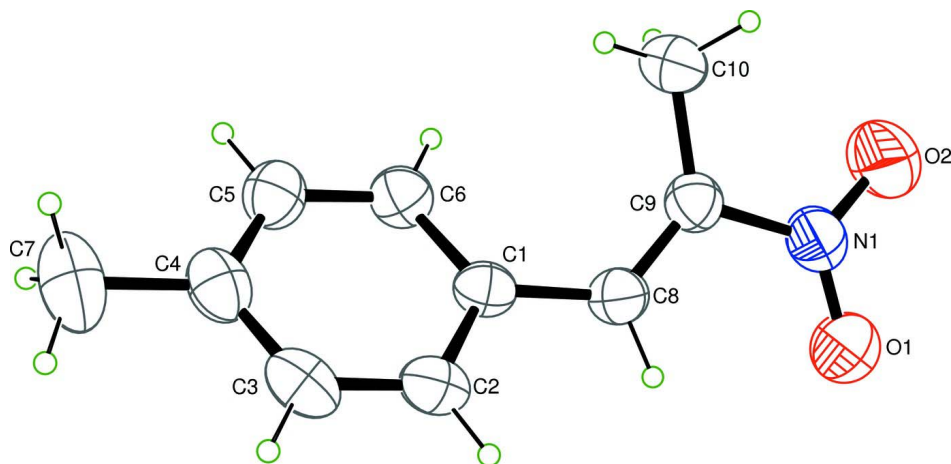
To a solution of *p*-tolualdehyde (50 mmol) in AcOH (25 mL), nitroethane (75 mmol) was added, followed by butylamine (100 mmol, 7.4 mL). The mixture was sonicated at 60 °C, until GC showed full conversion of the aldehyde. The mixture was poured into ice water, the precipitate was filtered off, washed with water and recrystallized from EtOH/EtOAc to give the final product. Single crystals were obtained by slow evaporation of a *n*-hexane/EtOAc (10:1, *v/v*) solution.

**Refinement**

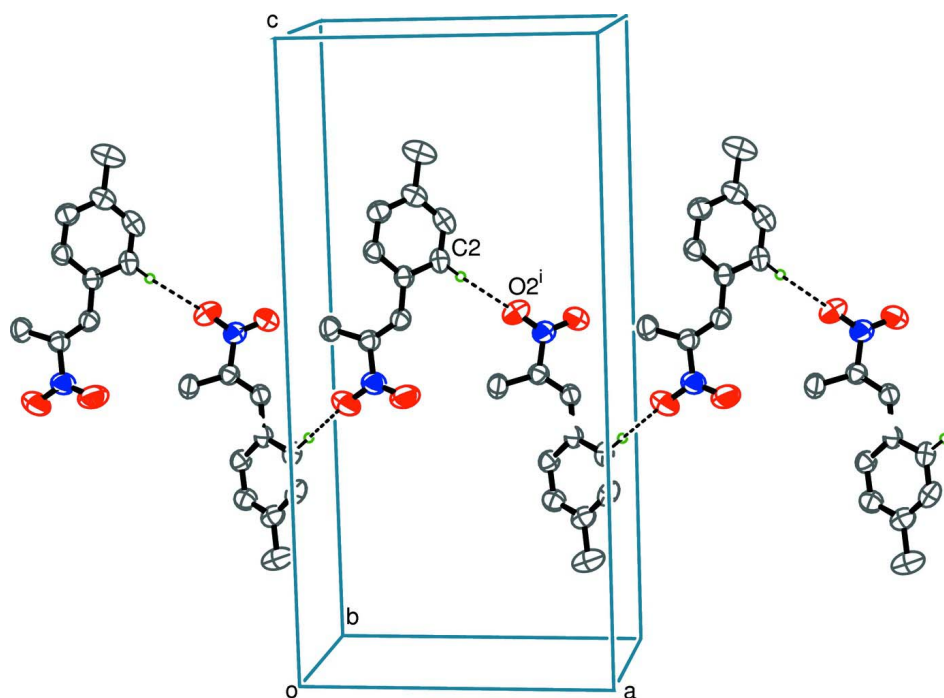
All H atoms were placed in calculated positions and refined using a riding model, with C—H = 0.93 Å and  $U_{\text{iso}}(\text{H}) = 1.2U_{\text{eq}}(\text{C})$  for aromatic H atoms, and with C—H = 0.96 Å and  $U_{\text{iso}}(\text{H}) = 1.5U_{\text{eq}}(\text{C})$  for methyl H atoms.

**Computing details**

Data collection: *PROCESS-AUTO* (Rigaku, 2006); cell refinement: *PROCESS-AUTO* (Rigaku, 2006); data reduction: *CrystalClear* (Rigaku, 2007); program(s) used to solve structure: *SHELXS97* (Sheldrick, 2008); program(s) used to refine structure: *SHELXL97* (Sheldrick, 2008); molecular graphics: *ORTEP-3 for Windows* (Farrugia, 1997); software used to prepare material for publication: *WinGX* (Farrugia, 1999).


**Figure 1**

The asymmetric unit of the title compound with the atomic labeling scheme; displacement ellipsoids are drawn at the 50% probability level.


**Figure 2**

View of the intermolecular interactions illustrated as dashed lines.

### 1-Methyl-4-[(1*E*)-2-nitroprop-1-en-1-yl]benzene

#### Crystal data

$C_{10}H_{11}NO_2$

$M_r = 177.20$

Orthorhombic, *Pbca*

Hall symbol: -P 2ac 2ab

$a = 11.0610 (5) \text{ \AA}$

$b = 7.5840 (4) \text{ \AA}$

$c = 22.6420 (11) \text{ \AA}$

$V = 1899.36 (16) \text{ \AA}^3$

$Z = 8$

$F(000) = 752$

$D_x = 1.239 \text{ Mg m}^{-3}$

Mo  $K\alpha$  radiation,  $\lambda = 0.71073 \text{ \AA}$

Cell parameters from 9467 reflections  
 $\theta = 3.2\text{--}27.4^\circ$   
 $\mu = 0.09\text{ mm}^{-1}$

$T = 296\text{ K}$   
 Chunk, yellow  
 $0.58 \times 0.43 \times 0.36\text{ mm}$

*Data collection*

Rigaku R-AXIS-RAPID/ZJUG  
 diffractometer  
 Radiation source: rotating anode  
 Graphite monochromator  
 Detector resolution:  $10.00\text{ pixels mm}^{-1}$   
 $\omega$  scans  
 Absorption correction: multi-scan  
 (ABSCOR; Higashi, 1995)  
 $T_{\min} = 0.941$ ,  $T_{\max} = 0.969$

16972 measured reflections  
 2162 independent reflections  
 1325 reflections with  $I > 2\sigma(I)$   
 $R_{\text{int}} = 0.033$   
 $\theta_{\max} = 27.4^\circ$ ,  $\theta_{\min} = 3.4^\circ$   
 $h = -14 \rightarrow 14$   
 $k = -9 \rightarrow 9$   
 $l = -29 \rightarrow 29$

*Refinement*

Refinement on  $F^2$   
 Least-squares matrix: full  
 $R[F^2 > 2\sigma(F^2)] = 0.045$   
 $wR(F^2) = 0.134$   
 $S = 1.00$   
 2162 reflections  
 121 parameters  
 0 restraints  
 Primary atom site location: structure-invariant  
 direct methods  
 Secondary atom site location: difference Fourier  
 map

Hydrogen site location: inferred from  
 neighbouring sites  
 H-atom parameters constrained  
 $w = 1/[\sigma^2(F_o^2) + (0.0552P)^2 + 0.4885P]$   
 where  $P = (F_o^2 + 2F_c^2)/3$   
 $(\Delta/\sigma)_{\max} = 0.001$   
 $\Delta\rho_{\max} = 0.15\text{ e \AA}^{-3}$   
 $\Delta\rho_{\min} = -0.17\text{ e \AA}^{-3}$   
 Extinction correction: SHELXL,  
 $F_c^* = kFc[1 + 0.001 \times Fc^2 \lambda^3 / \sin(2\theta)]^{-1/4}$   
 Extinction coefficient: 0.0051 (12)

*Special details*

**Geometry.** All e.s.d.'s (except the e.s.d. in the dihedral angle between two l.s. planes) are estimated using the full covariance matrix. The cell e.s.d.'s are taken into account individually in the estimation of e.s.d.'s in distances, angles and torsion angles; correlations between e.s.d.'s in cell parameters are only used when they are defined by crystal symmetry. An approximate (isotropic) treatment of cell e.s.d.'s is used for estimating e.s.d.'s involving l.s. planes.

**Refinement.** Refinement of  $F^2$  against ALL reflections. The weighted  $R$ -factor  $wR$  and goodness of fit  $S$  are based on  $F^2$ , conventional  $R$ -factors  $R$  are based on  $F$ , with  $F$  set to zero for negative  $F^2$ . The threshold expression of  $F^2 > \sigma(F^2)$  is used only for calculating  $R$ -factors(gt) etc. and is not relevant to the choice of reflections for refinement.  $R$ -factors based on  $F^2$  are statistically about twice as large as those based on  $F$ , and  $R$ -factors based on ALL data will be even larger.

*Fractional atomic coordinates and isotropic or equivalent isotropic displacement parameters ( $\text{\AA}^2$ )*

	$x$	$y$	$z$	$U_{\text{iso}}^*/U_{\text{eq}}$
C1	0.35993 (13)	0.1487 (2)	0.63005 (7)	0.0487 (4)
C2	0.46387 (14)	0.2326 (2)	0.65095 (8)	0.0577 (4)
H2	0.5248	0.2634	0.6246	0.069*
C3	0.47750 (16)	0.2703 (2)	0.71015 (8)	0.0643 (5)
H3	0.5464	0.3300	0.7227	0.077*
C4	0.39139 (17)	0.2218 (2)	0.75151 (8)	0.0614 (5)
C5	0.29031 (16)	0.1324 (2)	0.73072 (8)	0.0615 (5)
H5	0.2318	0.0957	0.7575	0.074*
C6	0.27416 (14)	0.0963 (2)	0.67157 (7)	0.0547 (4)
H6	0.2053	0.0363	0.6592	0.066*
C7	0.4073 (2)	0.2610 (3)	0.81617 (9)	0.0938 (7)

H7A	0.4047	0.1529	0.8382	0.141*
H7B	0.3435	0.3374	0.8292	0.141*
H7C	0.4839	0.3177	0.8223	0.141*
C8	0.34896 (14)	0.1144 (2)	0.56645 (7)	0.0531 (4)
H8	0.4211	0.0963	0.5462	0.064*
C9	0.24878 (15)	0.1058 (2)	0.53415 (7)	0.0524 (4)
C10	0.12094 (14)	0.1404 (3)	0.55103 (8)	0.0676 (5)
H10A	0.0791	0.0304	0.5557	0.101*
H10B	0.0824	0.2087	0.5207	0.101*
H10C	0.1189	0.2043	0.5876	0.101*
N1	0.26510 (15)	0.0587 (2)	0.47133 (7)	0.0689 (4)
O1	0.36592 (15)	0.0320 (3)	0.45180 (6)	0.1156 (7)
O2	0.17592 (15)	0.0466 (3)	0.44070 (7)	0.1107 (6)

Atomic displacement parameters ( $\text{\AA}^2$ )

	$U^{11}$	$U^{22}$	$U^{33}$	$U^{12}$	$U^{13}$	$U^{23}$
C1	0.0436 (8)	0.0448 (8)	0.0577 (9)	0.0026 (6)	-0.0012 (7)	0.0014 (7)
C2	0.0443 (8)	0.0582 (10)	0.0705 (11)	-0.0013 (7)	-0.0040 (8)	0.0051 (8)
C3	0.0588 (10)	0.0554 (10)	0.0788 (12)	-0.0025 (8)	-0.0221 (9)	-0.0002 (8)
C4	0.0758 (11)	0.0482 (9)	0.0602 (10)	0.0081 (8)	-0.0150 (9)	-0.0001 (8)
C5	0.0675 (11)	0.0592 (10)	0.0576 (10)	-0.0005 (8)	0.0030 (8)	0.0056 (8)
C6	0.0527 (9)	0.0527 (9)	0.0587 (9)	-0.0081 (7)	-0.0020 (7)	0.0009 (7)
C7	0.134 (2)	0.0821 (14)	0.0653 (12)	0.0051 (14)	-0.0291 (13)	-0.0057 (10)
C8	0.0474 (8)	0.0563 (9)	0.0555 (9)	0.0029 (7)	0.0031 (7)	0.0019 (7)
C9	0.0535 (8)	0.0525 (9)	0.0512 (8)	0.0023 (7)	-0.0009 (7)	0.0009 (7)
C10	0.0500 (9)	0.0809 (12)	0.0718 (11)	0.0055 (9)	-0.0033 (8)	0.0057 (9)
N1	0.0687 (10)	0.0811 (11)	0.0570 (9)	0.0123 (8)	-0.0067 (8)	-0.0012 (8)
O1	0.0869 (11)	0.197 (2)	0.0625 (9)	0.0435 (12)	0.0054 (8)	-0.0159 (10)
O2	0.0889 (11)	0.1695 (18)	0.0737 (10)	0.0049 (11)	-0.0255 (8)	-0.0238 (10)

Geometric parameters ( $\text{\AA}$ ,  $^\circ$ )

C1—C2	1.396 (2)	C7—H7A	0.9600
C1—C6	1.394 (2)	C7—H7B	0.9600
C1—C8	1.468 (2)	C7—H7C	0.9600
C2—C3	1.379 (2)	C8—C9	1.329 (2)
C2—H2	0.9300	C8—H8	0.9300
C3—C4	1.386 (3)	C9—N1	1.478 (2)
C3—H3	0.9300	C9—C10	1.488 (2)
C4—C5	1.390 (2)	C10—H10A	0.9600
C4—C7	1.504 (3)	C10—H10B	0.9600
C5—C6	1.378 (2)	C10—H10C	0.9600
C5—H5	0.9300	N1—O2	1.2094 (19)
C6—H6	0.9300	N1—O1	1.217 (2)
C2—C1—C6	117.50 (15)	H7A—C7—H7B	109.5
C2—C1—C8	118.77 (14)	C4—C7—H7C	109.5
C6—C1—C8	123.69 (14)	H7A—C7—H7C	109.5
C3—C2—C1	120.94 (16)	H7B—C7—H7C	109.5

C3—C2—H2	119.5	C9—C8—C1	128.09 (14)
C1—C2—H2	119.5	C9—C8—H8	116.0
C2—C3—C4	121.78 (16)	C1—C8—H8	116.0
C2—C3—H3	119.1	C8—C9—N1	116.07 (14)
C4—C3—H3	119.1	C8—C9—C10	129.97 (15)
C3—C4—C5	116.99 (16)	N1—C9—C10	113.95 (14)
C3—C4—C7	121.66 (18)	C9—C10—H10A	109.5
C5—C4—C7	121.35 (19)	C9—C10—H10B	109.5
C6—C5—C4	122.02 (16)	H10A—C10—H10B	109.5
C6—C5—H5	119.0	C9—C10—H10C	109.5
C4—C5—H5	119.0	H10A—C10—H10C	109.5
C5—C6—C1	120.70 (15)	H10B—C10—H10C	109.5
C5—C6—H6	119.7	O2—N1—O1	121.78 (17)
C1—C6—H6	119.7	O2—N1—C9	118.09 (16)
C4—C7—H7A	109.5	O1—N1—C9	120.13 (15)
C4—C7—H7B	109.5		
C6—C1—C2—C3	-3.5 (2)	C8—C1—C6—C5	179.77 (15)
C8—C1—C2—C3	178.93 (15)	C2—C1—C8—C9	-150.12 (16)
C1—C2—C3—C4	2.3 (3)	C6—C1—C8—C9	32.5 (3)
C2—C3—C4—C5	0.2 (2)	C1—C8—C9—N1	-176.58 (15)
C2—C3—C4—C7	179.15 (17)	C1—C8—C9—C10	4.9 (3)
C3—C4—C5—C6	-1.4 (2)	C8—C9—N1—O2	178.77 (17)
C7—C4—C5—C6	179.65 (17)	C10—C9—N1—O2	-2.5 (2)
C4—C5—C6—C1	0.1 (3)	C8—C9—N1—O1	-0.8 (3)
C2—C1—C6—C5	2.3 (2)	C10—C9—N1—O1	177.99 (18)

Hydrogen-bond geometry (Å, °)

<i>D</i> —H... <i>A</i>	<i>D</i> —H	H... <i>A</i>	<i>D</i> ... <i>A</i>	<i>D</i> —H... <i>A</i>
C8—H8...O1	0.93	2.28	2.677 (2)	105
C8—H8...O1 <sup>i</sup>	0.93	2.55	3.369 (2)	147
C2—H2...O2 <sup>ii</sup>	0.93	2.66	3.551 (3)	162

Symmetry codes: (i)  $-x+1, -y, -z+1$ ; (ii)  $x+1/2, -y+1/2, -z+1$ .